

Shinewater Primary School

Our Curriculum

Swale Academies Trust



Our Approach to the Curriculum

At Shinewater we employ a cross-curricular “Learning Adventure” approach to our curriculum, to make learning a more meaningful and inspiring experience for our pupils. Our curriculum is designed to combine knowledge, skills and attitudes into engaging topics. The Learning Adventure may change depending upon the children’s interests and teachers review the themes on a yearly basis. Learning journeys are available to view on the year group pages of this website.

Well planned Learning Adventures enable and encourage links with home and the community, support children’s independent and group learning skills and provide a variety of opportunities for pupils to learn. A focus is placed on the development of skills and aptitudes such as problem solving, reasoning and self-awareness which underpin the content and are ongoing and transferable.

It is important that children have a rich and exciting curriculum experience at primary school, learning in a variety of ways. We encourage all our children to work to the best of their ability, to take risks, to learn from their mistakes and always strive to be the best they can be.

Our curriculum is based on the DFE Primary Curriculum 2014 and, in our Reception class, on the Early Years and Foundation Stage curriculum supported by Development Matters. We provide for the comprehensive academic, personal and social development of every child, while encouraging each one to work and think independently and to make decisions and choices and to follow our Rainbow Rules.



The Thinking Behind Our Curriculum



We recognise that the children at Shinewater Primary School represent a highly diverse group of individual learners. We live in a cosmopolitan world, where communities must learn to live and share with each other. Using British values as our core ethos, we aim to equip children for lifelong learning and enable them to live harmoniously with the whole community.

At Shinewater, we are preparing children to become future citizens and aim to give them the skills and understanding to make a positive contribution to society. We develop their independence and awareness of others from the start. They are taught about social, global, political and environmental issues, how to question, how to contribute and how to make a difference. We encourage children to broaden their horizons and

aim high. We want our children to be creative, successful, resilient and reflective learners who make progress and achieve, who become confident individuals who know how to live safe, healthy and fulfilling lives and who become responsible citizens who make a positive contribution to society. Every learning child at Shinewater has the right to a fulfilling educational adventure that will provide the bedrock for further

The Thinking Behind Our Curriculum Continued



Our curriculum is broad, flexible and modern, enabling teachers to plan personalised and stimulating learning which questions and challenges children. A curriculum which facilitates the combining and connecting of areas and ideas while generating innovative approaches. Above all, we want to support every child's understanding, confidence and the courage to take a few risks along the way, while promoting

a developing sense of autonomy and learning satisfaction.]

Our children are involved in charitable activities, and support causes they believe in and committing to raising awareness and funds for it. Children are encouraged to recognise the importance of providing service to others.

Our children are involved in decision making through the elected school

council and whole school gather assemblies. They get to meet council members, the local MP's, visit the Houses of Parliament and learn the value of living in a democracy.

First and foremost, the curriculum at Shinewater is designed to encourage a growth mindset and to inspire children to be the best they can be.

How Learning is Organised



Our teachers are encouraged to find ways of organising children's learning which promote excellence, enjoyment, perseverance, self-discipline and independent learning. We have designed our curriculum so that children are able to develop key skills, to apply them across all subject areas and to make connections between aspects of learning.

Children are taught in parallel, single age group classes of mixed ability. Subjects are often drawn together or integrated so that the children are provided with a more cohesive, meaningful learning experience, rooted in context and life skills. SMSC and British Values are central to all we do at Shinewater.



Reading is given a high priority in our curriculum as it the ability to read and understand which opens up learning for children. We run a reading challenges which requires children to read at least three times a week outside of school. We strive to make reading as much fun as possible through visiting authors and storytellers. We believe the development of children's vocabulary is a vital tool in learning and understanding the full curriculum and reading is a priority area for our School Development Plan.

Planning

Teachers plan together, and at times, across the Swale Eastbourne Hub. The school has invested time into developing our long term planning-which can be found on the website. This planning ensures there is a sequence of learning for each subject across the year groups and that children build upon their prior knowledge. The long term planning is further broken down into a pacing grid, which is developed for each Learning Adventure. The pacing grid enables planning a clear sequence of lessons to be developed as well a wow starters and fabulous finishes. Pupils help to plan the learning for each learning adventure and create their own learning Adventure books. Teachers are provided with regular training and support to help them be the best they can be.





Core Subjects



English

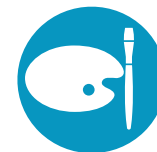


Mathematics



Science

Foundation Subjects



Art and Design



Computing



PSHE



Geography



Religious Education



History



Modern Foreign Language- French



Music



Design and Technology



Physical Education

How Learning is Organised in EYFS

In our reception class, children follow the Early Years Foundation Stage (EYFS) curriculum for children from birth to five. The curriculum is made up of seven areas (three prime and four specific) of learning:

Prime Areas:



Communication and Language



Physical Development



Personal, social and emotional development

Specific Areas:



Literacy



Mathematics



Understanding the World



Expressive Arts and Design

Children are encouraged to develop and use the new skills they have been taught in a well-planned, play-based curriculum, where many activities are child-initiated. Continuous observations are made of the children's learning journey, which are documented along with photographs for their Foundation Stage Profile. The children have full and continuous access to our outdoor environment and this forms an integral part of their learning development.

Parents and staff use the Tapestry system to track assessments and to provide information and feedback.

Outdoor and Residential Learning Opportunities



Shinewater has an amazing outdoor learning space as well as a specialist teacher who is trained in forest school, beach school, outdoor learning and mindfulness. Our bespoke outdoor learning curriculum is supported by our fantastic outdoor learning environment we make full use of learning outside wherever possible.

In Year 6, the children take part in a residential trip to the Isle of Wight as part of their outdoor learning curriculum. These are planned to provide them with a range of opportunities that they would otherwise not be able to access through school.

Visits and Visitors



Teachers are encouraged to take their class out of the classroom to explore the wider community beyond the classroom. Trips are planned for a variety of experiences including fieldwork, to support the arts, conservation and animal welfare, supporting British values, historical research and much more. The trips are used to enrich learning, develop skills, knowledge and understanding. Trips and visitors have included museums, story teller, WW11 experts, sports people, conservation groups, charities and heritage site-please see our Community Enrichment document for more details.

Assemblies

Assemblies take place every day and reflect the school community at Shinewater and our understanding of our place in the richly diverse, wider world. Assemblies explore themes such as friendship, perseverance, self-esteem and tolerance however we also explore festivals and traditions from different cultures. Each assembly starts with a BIG THINKING question and children enter the hall accompanied by the music which represents the value of the week. Classes are chosen to evaluate the assemblies and give feedback to the teachers so we are in a constant cycle of improvement and reflection. We learn about famous people and their contributions to the history of mankind, and how to aspire to be the best we can be, how to keep ourselves healthy and safe both in body and in mind. Visitors are invited to lead assemblies and these have included our local MP, a magaitare, sports people, charities other form our community. once a week we have a special celebration assembly to acknowledge the achievements of those within our own and the wider community, as well as reflecting on ourselves as learning leaders of the future.



Legal Status of Collective Worship



All maintained schools in England must provide a daily act of collective worship.

Right to Withdraw

Parents have the right to withdraw their child from the daily act of collective worship. Schools must comply with this wish and must ensure a duty of care for pupils who are withdrawn from collective worship.

Collective worship guidance is contained in Circular 1/94.

The school will respect parental requests and will try to discuss the request to see if an accommodation can be reached and to ensure worship remains inclusive and invitational and open to all members of the school community.



Enrichment Beyond the School Day

As well as the learning that we organise during the school day, we also offer a wide range of before- and after-school clubs and activities. These are offered to different age groups at different times throughout the year and have included dance, football, tennis, multi-skills, cricket, karate, sewing, gardening, athletics, film club, we also provide early morning and after-school revision booster sessions for our children in year 6. We offer instrumental tuition during the school day, at lunchtimes and after school. These currently include guitar, violin and ukulele. Our clubs run at very low cost to parents.

